



Official Program

St. Benedict's College

vs.

Fort Hays State

SATURDAY, OCTOBER 15

Lewis Field Stadium

8:00 p.m.

FIFTEEN CENTS

986-07-14



LEWIS FIELD STADIUM

Tiger Coaching Staff



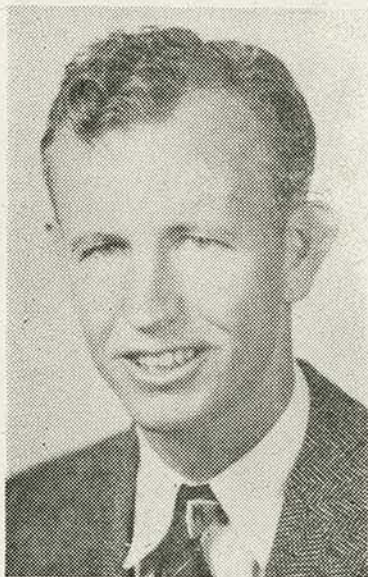
PAUL B. GROSS
Director of Athletics



RALPH "RED" HUFFMAN
Head Football Coach



ALEX FRANCIS
Head Track Coach



MARION McDONALD
Assistant Coach

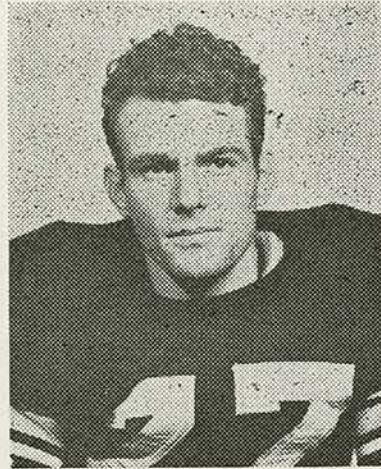


CADE SURAN
Head Basketball Coach

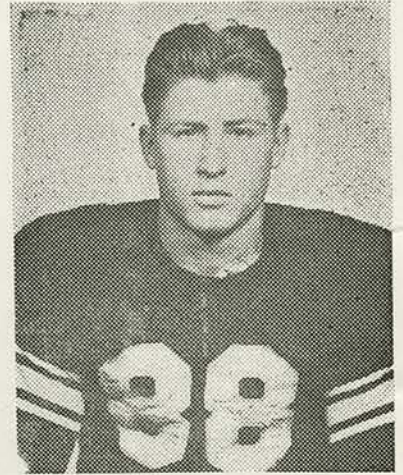
THE 1949 TIGER SQUAD



"PETE" KOERNER
Guard



JACK HAGUE
Halfback



"COTTY" MATAL
Halfback



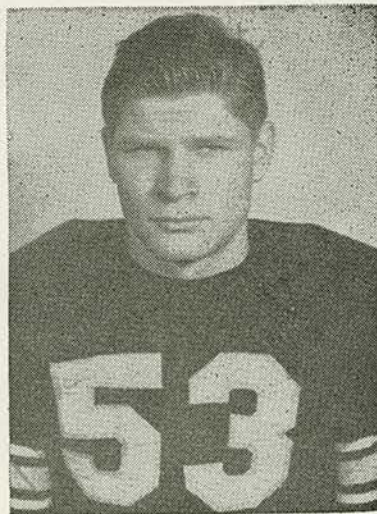
REX MARXMILLER
Halfback



LEON "BLACKIE" ROBERTS
Fullback



MARION SCHMIDT
Quarterback



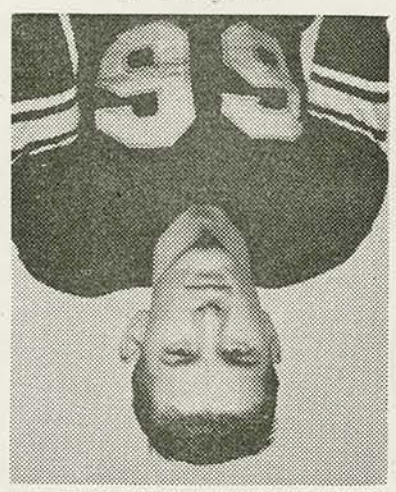
BOB WOHLMEIER
Tackle



DON MILLER
Guard

THE 1949 TIGER SQUAD

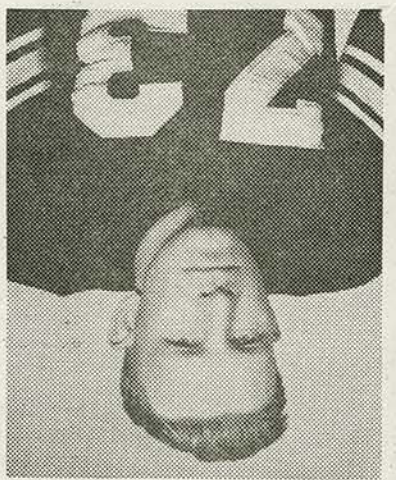
GENE HESS
Quarterback



KEITH BALDING
Tackle



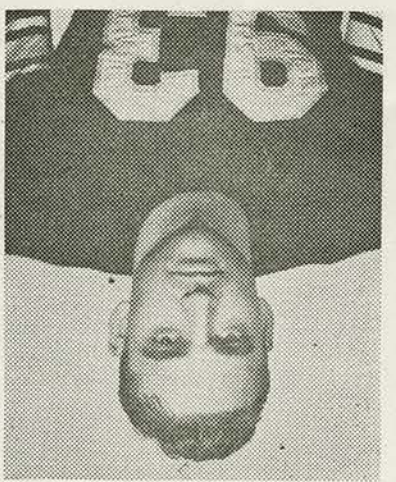
RAY SKUBAL
Guard



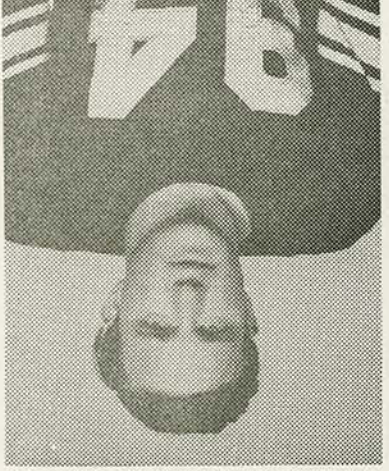
HERSCHEL BETTS
Halfback



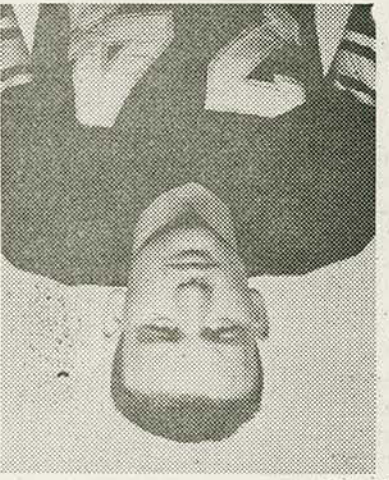
REX McCONNELL
Fullback



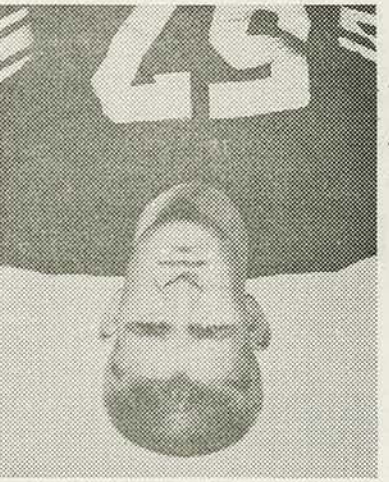
VAUGHN WELLS
Tackle



JOHN CARMODY
Halfback



CHARLIE JOHNSON
Tackle



Tonight's Game History

When the Fort Hays State Tigers come on the field tonight against the invading St. Benedict's Ravens, it will be the 13th gridiron meeting of the two Kansas schools. So far, in the series between the Ravens and the Tigers, St. Benedict's has held an overwhelming edge. The boys from Atchison have won eight games, the Tigers have won two, and the two other contests ended in ties.

Up until 1947, the Fort Hays Staters had never beaten St. Benedict's, but in that year, the Tigers, with many of tonight's Tigers playing, including Jack Hague, Rex Marxmiller, Don Leuszler, Harry Johnston, and others, knocked off the Ravens 27-7. Incidentally, that win left the Tigers in first place in the Central conference, and a Tiger victory tonight would put Fort Hays State back on the road to CIC leadership.

Last year at the Fort Hays State Homecoming, the Ravens from Atchison were never in the game as the Tigers rolled over them 40-0. However, last year's St. Benedict's eleven was polished off nine straight times without a win, and the Ravens finished in the Central conference cellar.

In 1934, St. Benedict's and Fort Hays State met on the football field for the first time and battled to a 6-6 tie. The next year, the team that won the famous 3-0 victory over Kansas State was just another team to the Ravens, who slapped the Tigers 18-0. In 1936, St. Benedict's won 27-12, and in 1937, the Tigers tied the Ravens 7-7.

Beginning in 1938, St. Benedict's began a winning streak against the Tigers that lasted through six straight games, up to 1947. The Ravens won 19-14 in 1938, 13-7 in 1939, 6-0 in 1940, 26-7 in 1941, 33-0 in 1942, and in 1946, Ralph Huffman's first year as Tiger mentor, 14-7.

Fort Hays State Roster

No.	Name	Home Town	Pos.	Ht.	Wt.	Yr.	Age
83	Augustine, Harold	Hays	G	5-10	178	Soph.	20
65	Balding, Keith	Medicine Louge	T	6-	190	Sr.	25
78	Batchelor, Wayne	Wichita	G	5-10	170	Fr.	18
66	Betts, Herschel	Oberlin	B	5- 9	165	Jr.	22
99	Brown, Roger	Smith Center	C	5-11	175	Sr.	20
76	Campbell, Billy	Beloit	G	5-10	160	Sr.	21
74	Carmody, John	Hays	B	6-	170	Soph.	21
90	Garrity, Steve	Wellington	C	6-	170	Fr.	18
69	Farley, Jim	Meade	B	5- 7	147	Jr.	23
85	Feasel, Robert	Belleville	E	6-	185	Jr.	23
69	Finney, Jack	McPherson	B	5-10	160	Soph.	18
98	Gallagher, John	Goodland	G	5- 8	180	Fr.	18
81	Gerstner, LeRoy	Hays	E	5-11	184	Fr.	18
72	Greenstreet, Herb	Offerle	B	5- 8	170	Soph.	23
67	Gibbs, John	Delphos	B	5- 8	150	Soph.	19
93	Haas, Frank	Hays	E	6- 2	192	Fr.	18
77	Hague, Jack	Oberlin	B	5-10	166	Sr.	23
75	Hamilton, Art	Oberlin	B	6- 1	158	Soph.	21
70	Merkle, Dean	Fowler	B	5- 8	155	Fr.	17
71	Hess, Gene	Herington	B	5-10	160	Soph.	18
52	Hooper, Wilford	Stockton	T	6- 1	203	Jr.	19
97	Hubbard, Jo	Waldo	T	6- 1	192	Jr.	20
57	Johnson, Charles	Hays	T	6- 3	245	Sr.	23
63	Johnston, Harry	Palco	E	6- 1	192	Sr.	22
91	Jones, Art	Hill City	C	6- 2	190	Soph.	20
95	Jones, Melvin	Spearville	T	6- 1	185	Sr.	25
92	Keeley, Mac	Pawnee Rock	B	6-	190	Soph.	21
82	Koerner, Donald	Hays	G	5- 7	185	Soph.	20
96	Leuszler, Don	Almena	E	6-	178	Sr.	24
79	Marxmiller, Rex	Smith Center	B	6-	180	Sr.	22
88	Matal, Eldon	Otis	B	5- 8	165	Soph.	18
64	Miller, Don	Fowler	G	5-10	208	Fr.	20
87	Murphy, John	Garden City	G	5-10	197	Sr.	25
61	McConnell, Rex	Minneola	B	6- 1	190	Jr.	22
80	Nichol, Don	Palco	E	6- 2	176	Sr.	21
84	Pfeifer, Dan	Hays	C	6- 2	180	Fr.	18
89	Pfeifer, George	Hays	E	6- 1	170	Jr.	24
59	Rathbun, Harry	Atwood	T	6- 3	205	Sr.	26
60	Roberts, Leon	Lewis	B	6- 2	190	Soph.	21
58	Schmidt, Marion	Hays	B	5-10	184	Fr.	18
86	Simmons, Fred	Mankato	E	6- 1	170	Sr.	23
73	Skubal, Raymond	Jennings	G	5-10	160	Sr.	24
94	Wells, Vaughn	Osborne	T	5-10	190	Soph.	19
53	Wohlmeier, Bob	Jennings	T	6- 3	195	Fr.	18

FORT HAYS KANSAS STATE COLLEGE

PROBABLE STARTING LINEUP

	LHB Hague 77		FB Roberts 60		RHB Matal 88	
			QB Schmidt 58			
LE Gerstner 81	LT Haas 93	LG Augustine 83	C Garrity 90	RG Koerner 82	RT Wohmeier 53	RE Fowler 70

SQUAD LIST

52 Hooper	71 Hess	85 Feasel
53 Wohlmeier	72 Greenstreet	86 Simmons
56 Balding	73 Skubal	88 Matal
57 Johnson	74 Carmody	89 Pfeifer
58 Schmidt	75 Hamilton	90 Garrity
59 Rathbun	76 Campbell	91 Jones
60 Roberts	77 Hague	92 Keeley
61 McConnell	78 Bachelor	93 Haas
63 Johnston	79 Marxmiller	94 Wells
64 Miller	80 Nichol	95 Jones
66 Betts	81 Gerstner	96 Leuszler
67 Gibbs	82 Koerner	97 Hubbard
68 Farley	83 Augustine	98 Gallagher
69 Finney	84 Pfeifer	99 Brown
70 Fowler		

OFFICIALS

Referee—Morconi
 Umpire—Johnson
 Head Linesman—Bidwell



SCORE	1	2	3	4	TOTAL

Coke=Coca-Cola

"Coca-Cola" and its abbreviation "Coke" are the registered trade-marks which distinguish the product of The Coca-Cola Company.

Have a Coke



Illegal forward pass



Penalty refused, incomplete pass, missed goal, etc.



Holding



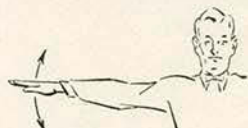
Delay of game or excess time out



Roughing kicker



Illegal motion or formation at snap



Personal foul

REFEREE'S



ST. BENEDICT'S COLLEGE

PROBABLE STARTING LINEUP

LHB Lemar 17			FB Coupe 14		RHB Tabor 10	
			Walsh 20 QB			
LE Haas 25	LT Cunningham 48	LG Prohaska 47	C Lopez 11	RG O'Malley 39	RT Amico 50	RE Benko 30

SQUAD LIST

10 Tabor	29 Lynch	48 Cunningham
11 Lopez	30 Benko	49 Peterson
12 Giacomini	31 Christ	50 Amico
13 Kruzick	32 Costanzo	51 Ciesielski
14 Coupe	33 Boeh	52 Suntrup
15 Springman	34 Collins	53 Ramirez
16 Kelly	35 Jackson	Brosnan
17 Lemar	36 Kleine	Fini
18 Kostecki	37 Haavig	Harrison
19 Ceresia	38 Dorris	Hill
20 Walsh	39 O'Malley	Holliday
21 Cindrich	40 Molini	Kellett
22 Berning	41 Frain	McCabe
23 Vickman	42 Walters	Rafferty
24 Galley	43 Holleran	Silovsky
25 Haas	44 Morrissey	Sulzman
26 Weissbech	45 Stavniak	Vickman
27 Anderson	46 Cavanaugh	Wetzler
28 Silberberg	47 Prohaska	








COACHES

BOB WALSH—Head Coach
AL LEE—Assistant Coach

Coca-Cola



SIGNALS

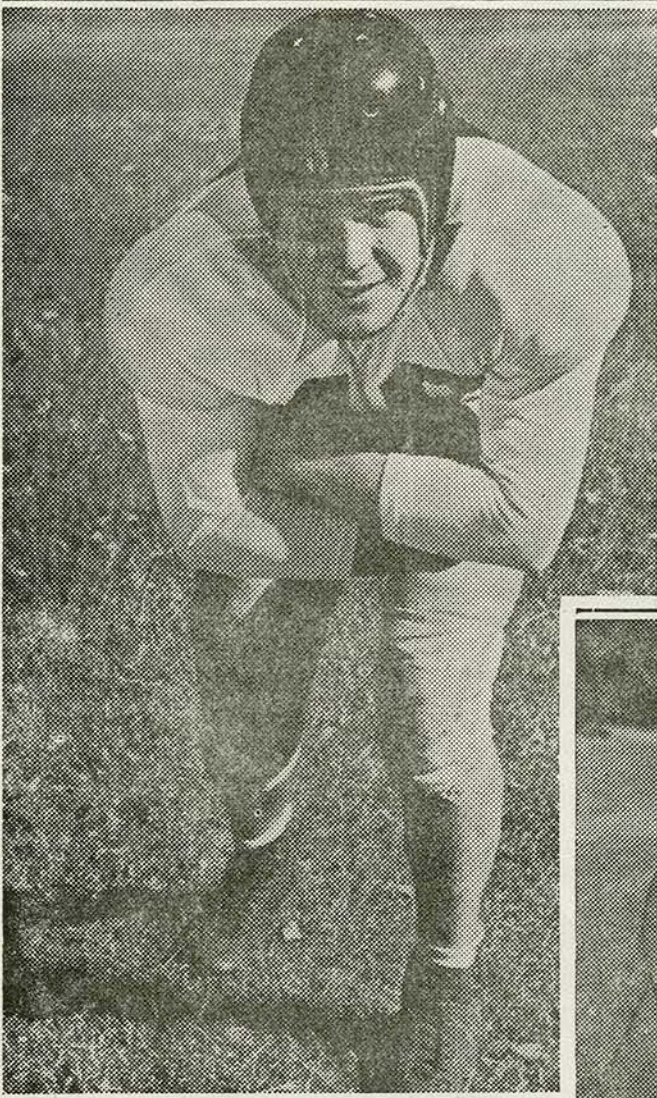
 Interference with fair catch or forward pass	 Clipping	 Off-side or violation of free-kick rules	 Crawling, pushing or helping runner	 Safety	 A score	 Time out
---	---	---	--	---	--	---

St. Benedict's Football Roster

No.	Name	Pos.	Age	Ht.	Wt.	Home	Yr.
50	Amico, Joe*	T	19	6- 2	205	Detroit	4
27	Anderson, Ed	C	18	6-	180	Chicago	1
30	Benko, Charlie*	E	24	6- 1	195	Chicago	4
22	Berning, Jim*	B	20	5- 9	195	Ashton, Iowa	2
33	Boer, Tom	T	21	6- 1	205	Atchison	2
	Brosnan, Jim	C	22	5-10	175	Kansas City, Mo.	1
46	Cavanaugh, Leo	E	18	6- 2	195	Chicago	1
19	Ceresia, Frank	B	19	6- 1	185	St. Louis	1
31	Christ, Tony	B	17	6-	190	St. Joseph	1
51	Ciesielski, John	E	20	6- 3	220	Depue, Ill.	3
31	Cindrich, Joe	C	19	6- 1	195	Kansas City, Kan.	2
34	Collins, Jim	G	19	5-11	185	Chicago	1
32	Costanzo, Paul	B	20	5-11	185	Kenosha, Wis.	1
14	Coupe, Jack*	B	22	5-10	175	Atchison	3
48	Cunningham, Jim*	T	21	6- 2	210	Paola, Kan.	2
38	Dorris, Bob	T	18	6- 2	185	Chicago	1
	Fini, Don	B	19	6- 7	160	Walsenburg, Colo.	1
41	Frain, Bill	T	19	6- 1	205	St. Louis	3
24	Galley, Guy*	B	23	5-11	185	Chicago	4
12	Giacomin, Johnny	G	19	5- 7	185	Gary, Ind.	1
25	Haas, Bob	E	19	6- 2	190	Hays, Kan.	2
37	Haavig, Jay	B	19	5-11	200	Chicago	1
	Harrison, Don	T	17	6- 1	190	Ottawa, Kan.	1
26	Hayes, Ed	E	20	6-	185	Chicago	1
	Hill, Bill	T	19	6-	215	Atchison	1
43	Holleran, Bob	G	19	5- 9	195	Chicago	1
	Holliday, Bob	C	17	6-	220	Alton, Ill.	1
35	Jackson, Jim	C	17	5-11	195	Canon City, Colo	1
	Kellett, Lee	G	19	5-10	185	St. Louis	1
16	Kelly, Chuck	B	19	5- 9	155	Chicago 1	1
36	Kleine, Bob	E	24	6- 9	265	Slater Mo.	3
18	Kostecki, Vic	B	20	5-11	175	Chicago 1	1
13	Kruzick, Phil	G	18	5-10	170	Springfield Ill.	1
17	Lemar, Jim	B	19	5- 8	165	Chicago	2
11	Lopez, Mike*	C	19	5-10	175	St. Joseph	2
29	Lynch, Bob	E	23	6- 1	195	Kansas City, Mo.	3
	McCabe, Howard	B	19	5-10	175	Zurich, Kan.	1
40	Molini, Paul	T	20	5-11	200	St. Louis	3
44	Morrissey, Joe	B	18	6- 2	210	St. Louis	1
39	O'Malley, Frank	G	20	5-10	195	Chicago	2
49	Peterson, Gene	T	18	6- 2	195	McDonald, Kan.	1
47	Prohaska, John*	G	21	6- 2	210	Atchison	3
	Rafferty, Jerry	B	19	5-10	175	Dover, Kan.	1
53	Ramirez, Lou	G	18	5-11	180	Springfield, Ill.	1
28	Silberberg, Gene	E	19	6- 2	180	St. Louis	1
	Silovsky, George	C	20	6-	200	Chicago	1
15	Springman, Bill	E	18	6-	180	Alton, Ill.	1
45	Stavniak, Corky	G	18	6- 1	195	Wichita	1
	Sulzman, Bob	E	18	6-	170	Selden, Kan.	1
52	Suntrup, Don	B	20	6- 2	210	Maplewood, Mo.	1
10	Tabor, Don	B	18	5- 8	160	Atchison	2
23	Vickman, Hal	B	17	5-10	175	Canon City, Colo.	1
20	Walsh, Johnny	B	19	5- 6	170	Chicago	2
42	Walters, Red-	T	20	6- 2	210	Hays, Kan.	3
	Weissbeck, Gene	B	18	5- 9	170	Topeka	1
	Wetzler, Chuck	B	18	5- 8	160	Alliance, Nebr.	1

*Indicates Lettermen

St. Benedict's
Stars

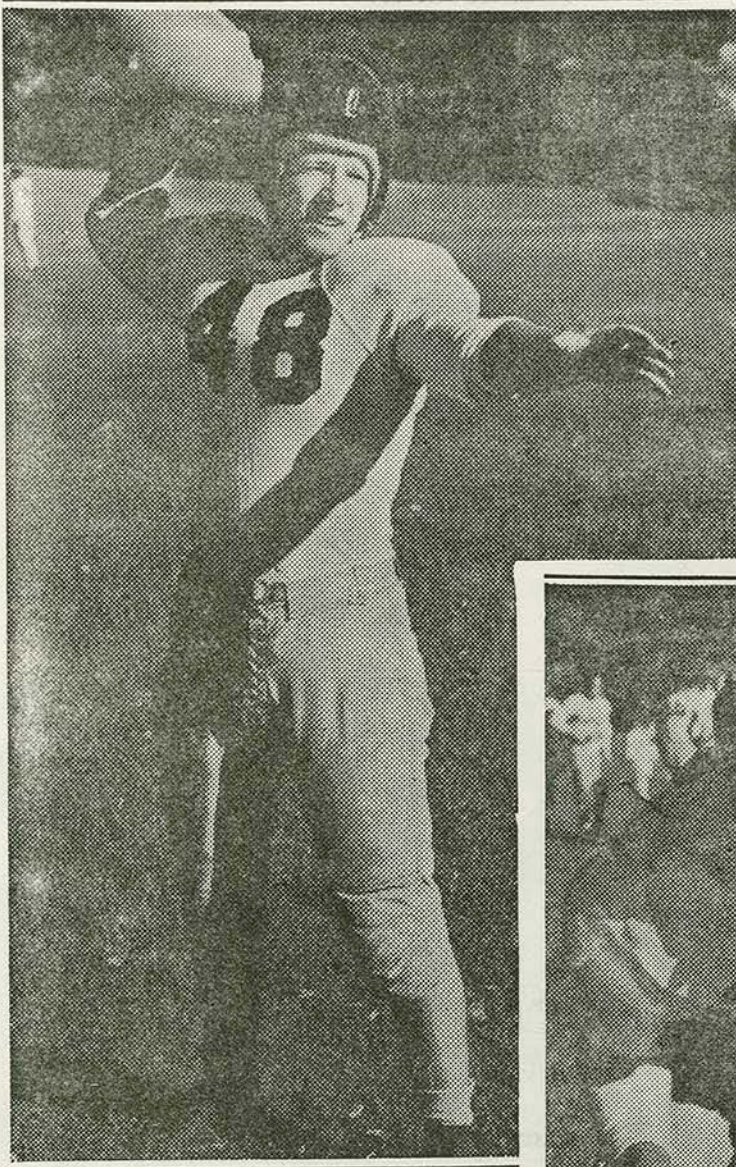


DON SUNTRUP

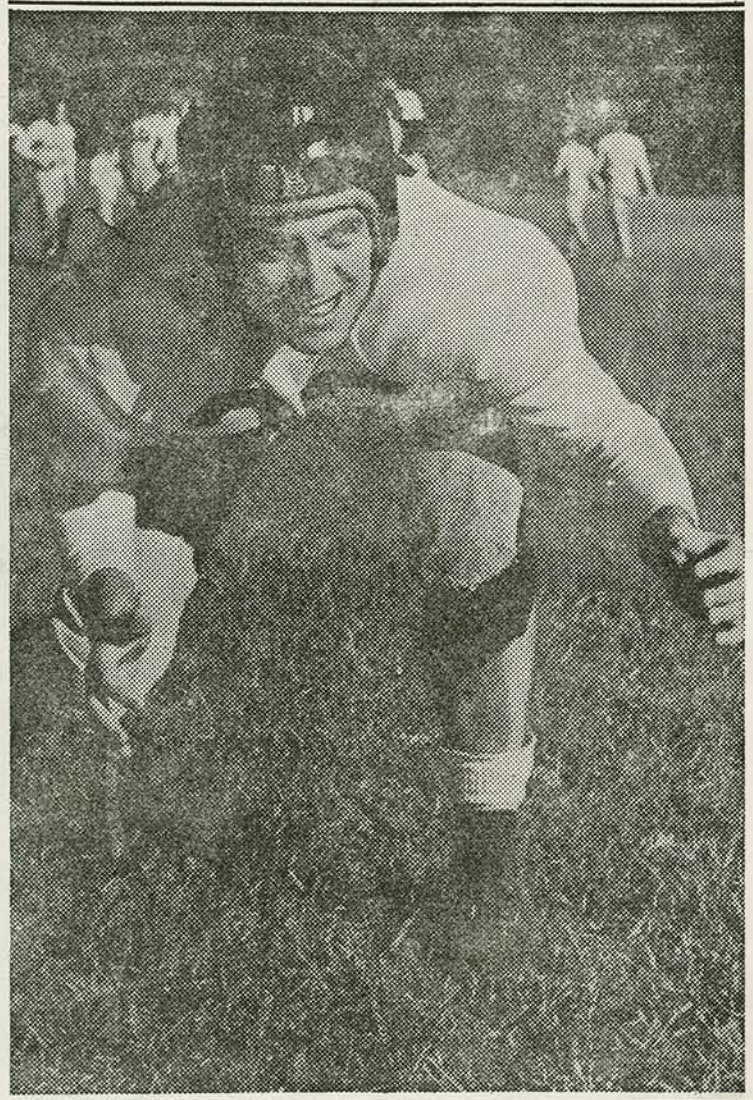


CHARLIE BENKO

St. Benedict's Stars



GUY GALLEY



JOE AMICO

Tiger Scoreboard

	FHS	OP.
Sept. 17—Kansas Wesleyan University	34	0
Sept. 24—Kansas State	0	55
Oct. 1—Southwestern College	14	0
Oct. 8—Pittsburg State	7	26
Oct. 15—St. Benedict's College	—	—
Oct. 22—Colorado College	—	—
Oct. 29—Emporia State	—	—
Nov. 5—Washburn University	—	—
Nov. 12—Rockhurst College	—	—

St. Benedict's Scoreboard

	SBC	OP.
Sept. 16—Concordia (Nebr.) Teachers	39	0
Sept. 22—William Jewell	13	6
Oct. 2—Rockhurst	27	13
Oct. 8—Loras (Iowa) College	6	33
Oct. 15—Fort Hays State	—	—
Oct. 22—Washburn University	—	—
Oct. 29—Pittsburg State	—	—
Nov. 5—Southwestern College	—	—
Nov. 12—Emporia State	—	—

Fort Hays State 1949-1950

BASKETBALL SCHEDULE

Dec. 2—Phillips University	Hays
Dec. 9—Colorado College	Colo. Spgs.
Dec. 10—Colorado College	Colo. Spgs.
Dec. 14—Kearney Teachers	Hays
Dec. 16—Eastern New Mexico	Hays
Dec. 22—Okla. Baptist U.	Shawnee
Dec. 23—Okla. City U.	Oklahoma City
Dec. 30—Maryville (Mo.)	Hays
Dec. 31—Maryville (Mo.)	Hays
* Jan. 6—Washburn University ...	Topeka
* Jan. 7—St. Benedicts	Atchison
Jan. 9—Maryville (Mo.)	Maryville
Jan. 14—Kansas Wesleyan U.	Salina
* Jan. 21—St. Benedict's	Hays
* Jan. 28—Emporia State	Hays
* Jan. 31—Washburn University	Hays
* Feb. 3—Southwestern	Winfield
* Feb. 4—Emporia State	Emporia
Feb. 8—Kansas Wesleyan	Hays
* Feb. 11—Pittsburg Teachers	Hays
Feb. 13—Oklahoma City U.	Hays
* Feb. 18—Rockhurst College	Hays
* Feb. 21—Southwestern	Hays
* Feb. 24—Pittsburg Teachers ...	Pittsburg
* Feb. 25—Rockhurst	Kansas City, Mo.

*Central Intercollegiate Conference Games

1949 Football Rules Changes

1. **AUTOMATIC TIME OUT AND UNLIMITED SUBSTITUTIONS EACH TIME THE BALL CHANGES HANDS, WITH TEAM "B" (the defensive team) BEING AWARDED A FIRST DOWN.** This will give the teams employing the two platoon system ample opportunity to substitute entire offensive and defensive units without being charged with a time out. Each team is entitled to four free time outs during each half and even after a team has exhausted its free time outs, it may have additional time outs to replace an injured player or players without penalty, providing only the injured player or players are replaced. During such time outs the opponents may make unlimited substitutions. The rule leaves unchanged the practice of unlimited substitutions any time the clock has stopped but these substitutions must be completed when the referee indicates the ball is ready for play.

2. **A LEGAL PASS INCOMPLETE IN THE OFFENSIVE TEAM'S END ZONE IS NO LONGER A SAFETY.** A team can now make a pass if it wishes within the confines of its own end zone without risking a safety on the pass becoming incomplete in its end zone; as on other parts of the field, the result will simply be loss of a down and the ball will be returned to the spot where it was last put in play. If, however, this team should complete a pass in its end zone and the runner should be tackled behind his goal line, the ball becoming dead there, the result will be a safety.

3. **THE RUNBACK OF A PUNT RECEIVED IN THE END ZONE WILL NOW BE PERMITTED.** This year the rules permit a safety man to run a punt out of his end zone instead of being forced to accept a touchback. Even if tackled in his end zone, the ball being declared dead there, he has nothing to lose inasmuch as he will be awarded a touchback and the ball will be put in play by scrimmage on his 20 yard line. As most football fans will remember, the determining factor between a safety and a touchback is IMPETUS. In other words, if the attacking team is responsible for putting the ball in the defending team's end zone and it becomes dead there, the result would be a touchback. If however, the defending team is responsible for putting the ball in its own end zone and it becomes dead there, the result would be a safety which scores two points for the attacking team and the ball is next put in play on the defending team's 20 yard line by a kick.

4. **THE REGULATION PERMITTING ONE SUBSTITUTE TO ENTER THE GAME AT ANY TIME WITH THE CLOCK RUNNING HAS BEEN RESCINDED.** The new rule was aimed at the constant parade of substitutes running on and off the field between every play, which in many ways disrupts the continuity of the game and is most confusing to those watching the game.

5. **FUMBLT OUT OF BOUNDS NO LONGER BELONGS TO TEAM WHICH LAST TOUCHED THE BALL BEFORE IT WENT OUT OF BOUNDS.** The new rule states that when a backward pass or fumble goes out of bounds between the goal lines, the ball becomes dead and belongs to the passing or fumbling team at the out of bounds spot. This rule is more equitable to the team who has fumbled the ball and eliminates players diving from all directions to try to touch the ball before it goes out of bounds, thereby eliminating the possibility of unnecessary injuries.

These three regulations were adopted in order to further clarify and define debatable points:

6. **THE CLIPPING RULE HAS BEEN AMENDED IN ORDER TO ELIMINATE UNNECESSARY PENALTIES.** The old rule called it clipping whenever a player was hit from the back even though it was not intentional. The new rule states that the action must take place below the waist, and reads as follows: "Clipping is throwing the body across running into the back of an opponent, other than the runner, below the waist."

7. **CLARIFICATION OF ILLEGAL USE OF THE HANDS IN BLOCKING.** In the past it was possible for a player using a shoulder or chest block to supplement it with his hand or forearm and inflict considerable punishment upon his opponent even though he could be penalized for illegal use of the hands. Now in order to try to eliminate this practice the Rules Committee has specifically fixed the position of the hand in a shoulder or chest block by stating that the hand must be in contact with the body during the entire block and at no time may the hands be locked.

8. **BACKFIELD MAN UNDER THE CENTER AS A LEGAL PASS RECEIVER IS BETTER DEFINED.** The old rule merely stated that this man must be at least 1 yard behind the line of scrimmage in order to be eligible to receive a forward pass. It was next to impossible in most cases for the officials to determine whether or not this man was 1 yard behind the line of scrimmage. In order to leave no doubt as to the eligibility of this man the clarification states: "A back who is in position to take a hand-to-hand snap from the center is an ineligible forward pass receiver." A back is considered in position to take a hand-to-hand snap if at the time the ball leaves its position on the ground, his feet and body are so placed that it would be possible by reaching with his hand to touch the ball before it leaves the snapper's hand. This applies even though this back's feet and body are 1 yard or more behind his scrimmage line.

